



INSTRUCTIONS FOR REFILLING XEROX PHASER 7500 SERIES

The toner cartridge is basically a plastic tube - containing toner and a chip. The cartridge can be refilled as many times as you want.

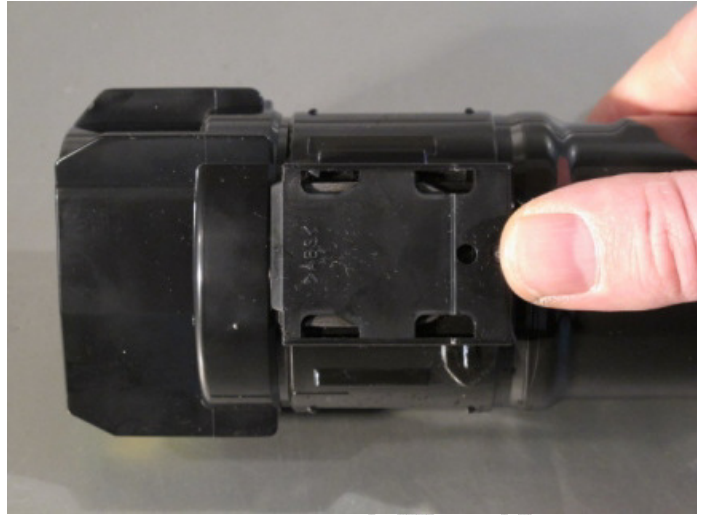
<p>Before you begin</p> <p>Please read instructions from start to finish, before you start your refill.</p> <p>Protect your work surface with old newspaper to catch any waste toner spills.</p>	
<p>When should I refill?</p>	<p>Toner Low – IGNORE AND KEEP PRINTING.</p> <p>When you cannot print then it is time to empty and refill the cartridge indicated.</p>
<p>Turn off your printer.</p> <p>Remove only the EMPTY toner cartridge from printer.</p> <p>Place the printer cartridge on several sheets of newspaper to catch any toner spills.</p>	

Locate the small plastic cover that covers the toner port. Note the orientation of the plastic cover.

The refill hole is hidden behind the plastic cover.

Slide off the plastic cover that covers the toner refill hole.

The plastic cover is on rails and is a tight fit so take your time don't break it – as we have to refit it later.



For best results shake / tap out the remaining toner from the cartridge **via the refill hole**.

Toner can be **very messy** – so empty the old toner directly into a sealable plastic bag.

This the part you are most likely to spill toner so please take care.

Wipe clean the cartridge after finishing.



<p>Shake your bottle of new toner vigorously for 20 seconds BEFORE removing the cap.</p> 	<p>Remove cap and seal.</p> <p>Fit the toner pouring spout securely to the bottle.</p> <p>Screw it down as tight as it will go.</p> 
<p>Wrap any type of tape around the base of the spout & neck of the bottle to prevent any fine toner powder escaping.</p>	
<p>Carefully insert the spout into the hole.</p> <p>(The toner will flow out like water, so take care not to spill it)</p>	
<p>There is a lot of toner to get into the cartridge this will take approx. 5 minutes. Don't rush this part.</p> <p>With the spout inserted – carefully “Upend” the cartridge and allow the toner to slowly pour down and into the cartridge.</p> <p>The toner port will be at the top nearest the ceiling so that gravity will help move the toner down inside the cartridge.</p>	

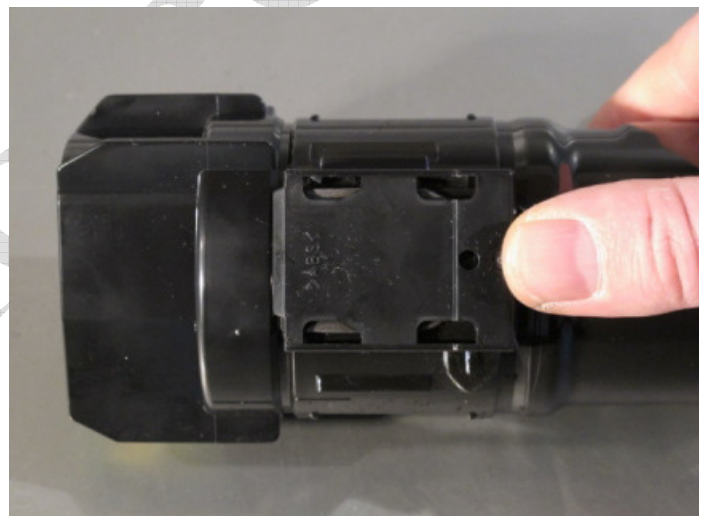
It can help to **very gently squeeze** the bottle **with minimum pressure** – i.e. the same pressure you would check the ripeness of a piece of soft fruit like a banana. This helps keep the toner moving.

If you squeeze the bottle too hard you will get toner powder escaping from the cartridge and landing on the floor. Avoid this !

When you have finished refilling the cartridge - lower the cartridge and remove the toner bottle from the port.

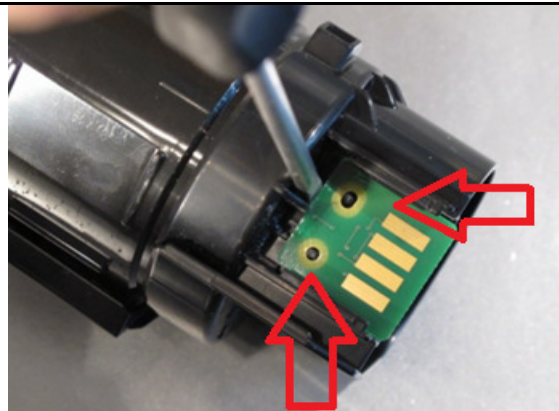


Replace the plastic cover. The cover must be replaced the correct way.



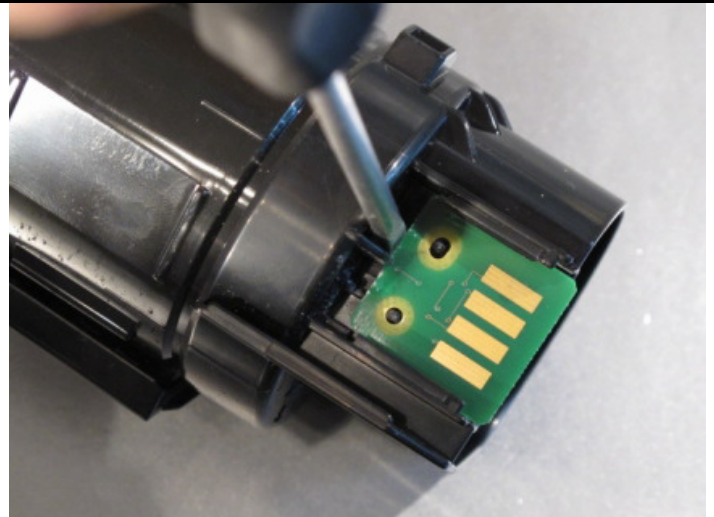
Stage 2 - Changing the Chip

1. The reset chip is located on end of the cartridge and is held in place by 2 locking tabs.

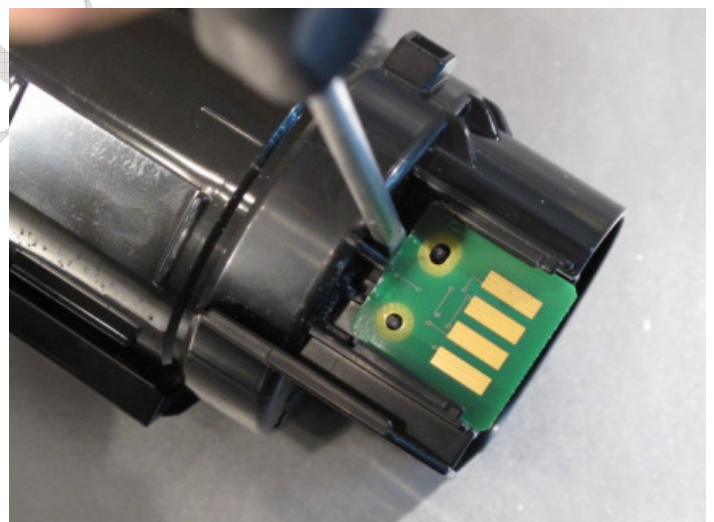


2. We need to release and remove the chip without breaking the plastic clips. Shown opposite.

The clips can be depressed from the front - or you can go in from behind and release them. Or a combination of both.



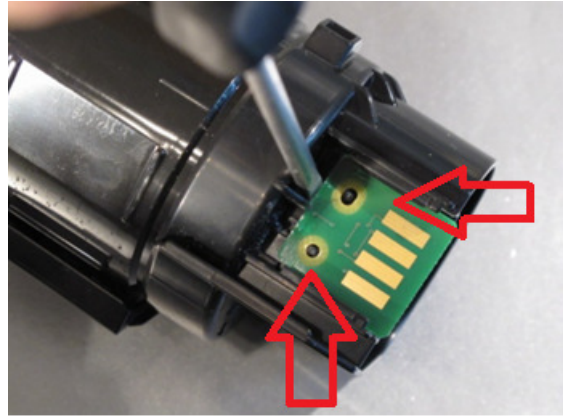
3. Once the clips are released its really easy to slide the chip.



Refit the new chip.

Slide the chip into place. The clips will probably reengage to lock it into place but if they don't manuvre them into place from behind so that they lock it into place.

The chip should be securely locked in place.



You can refill this cartridge as many times as you want. It will never need to be replaced by a new cartridge unless it becomes damaged.

Safety information:

- Toner powder should be treated as a nuisance dust. Not to be used by children.
- Avoid inhalation. Avoid eye & skin contact. Do not ingest. Inhalation: slight irritation of respiratory tract. Consult a doctor. Eye contact: Dust may cause irritation by mechanical abrasion. Consult a doctor.
- Skin contact: wash with soap and cold running water. Ingestion: No known hazard. Carcinogenicity: N/A, Mutagenicity: AMES test negative.

All safety information is given to help facilitate the safe use of this product and is based on information obtained from the manufacturer. This information is believed to be correct, but does not purport to be all inclusive and should be used only as a guide. Zinetic makes no warranty, express or Implied as to the accuracy or completeness of this information. It is the users responsibility to determine the suitability of this information for the adoption of necessary safety precautions and or compliance with local laws/regulations.

Zinetic is not associated with or endorsed by any of the cartridge / printer manufacturers referred to in any of our published works. Names of manufacturers, machines and part numbers are given as an aid to identification only. Names of manufacturers, machines and part numbers may be trade marks of the respective manufacturer. All Trade Marks hereby expressly acknowledged.