

INSTRUCTIONS FOR RESETTING BROTHER DR2000 DRUM

Before you begin

Don't touch the drum cylinder or expose it to sunlight. The drum is very sensitive to light and also touch and is very easy to damage.

**DO NOT TOUCH
THE DRUM**

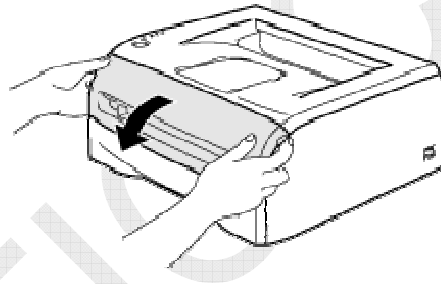


The Brother printer counts drum rotations and shuts the drum unit down when it reaches its page yield of 12,000 pages at 5% coverage.

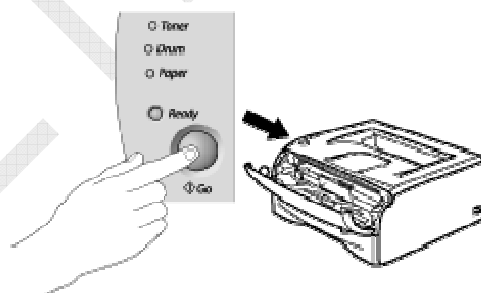
If your drum was working correctly prior to the "Image drum light" appearing, you can reset the drum unit on your printer and continue printing. We do this by telling the printer we have installed a new drum unit.

HL SERIES:

1. Remove the drum unit and toner cartridge. Wait 1 or 2 minutes.
2. Replace the drum unit and toner cartridge into printer.
3. The **Drum** LED continues to blink if the drum counter was not reset when you replaced the drum. We need to reset this now!
4. Open the front cover of the printer



5. Press and hold down **Go** button for about 4 seconds until all the LEDs light up.

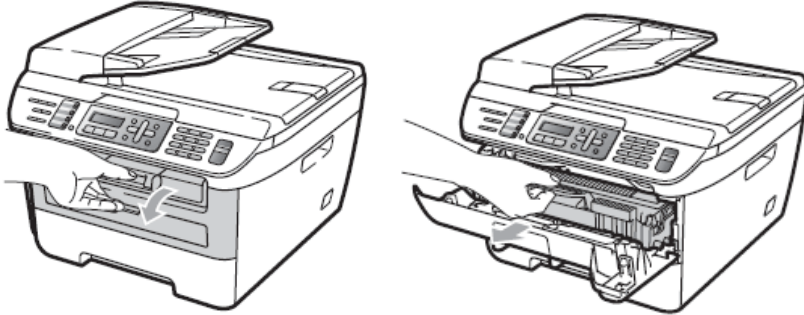


6. **Once all 4 LEDs are lit, release the Go button**
7. Close the front cover.
8. Your drum is now reset.

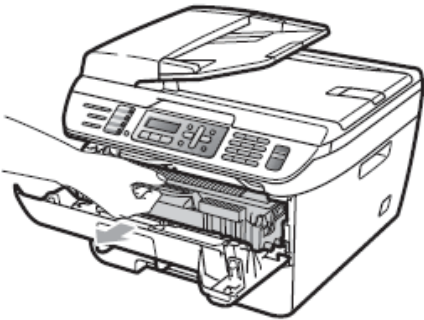
Resetting the drum unit will not improve print quality. It only resets your drum and allows you to continue to print. You decide when to replace the drum unit not the manufacturer !

MFC / DCP SERIES

1. Remove the drum unit and toner cartridge. Wait 1 or 2 minutes.



2. Replace the drum unit and toner cartridge into printer.



3. The error message "Change Drum Soon/ Drum end soon" will continue to appear if the drum counter was not reset when you replace the drum unit.
4. To clear this error message, you need to reset the drum counter as instructed below.
5. Make sure that the machine is turned on.
6. Press **Clear/Back**.

For MFC users:

To confirm you are installing a new drum, press **1**.

For DCP users:

To confirm you are installing a new drum, press the **Up** Arrow key

7. When the LCD shows **Accepted**, close the front cover.
8. Your drum is now reset.

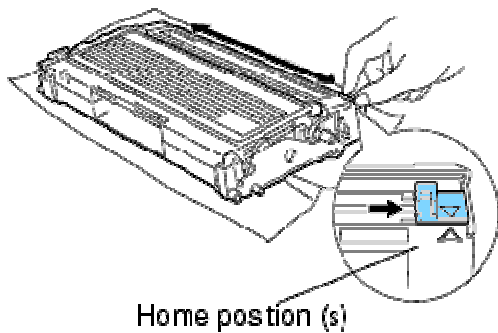
FAQS

Can I improve print quality?

Small print defects can sometimes be cleared simply by cleaning the corona wire on the drum unit.

Remove the drum and cartridge from the printer. Separate the drum from the toner cartridge.

Clean the primary corona wire inside the drum unit by gently sliding the blue tab from right to left and left to right several times. Return the tab to the home position before you put the drum unit back in the printer. If you do not, printed page may have a vertical stripe.



Help my drum didn't reset!

If the Drum LED is ON after you tried the reset, try cleaning the metal contacts with a dry lint-free soft cloth.



Zinetic is not associated with or endorsed by any of the cartridge / printer manufacturers referred to in any of our published works. Names of manufacturers, machines and part numbers are given as an aid to identification only. Names of manufacturers, machines and part numbers may be trade marks of the respective manufacturer. All Trade Marks hereby expressly acknowledged.